

**Featured In
This Issue:**

2009 COLA Awards

Humboldt County
Film Commission

Vallejo/Solano County
Film Commission

Tulare County
Film Commission

Chairman's Note

2009 California On Location Awards (COLAs)



Glenn Gainor, Head of Physical Production, Sony/
Screen Gems Receives Signature Award At The
2009 COLAs

LOS ANGELES, CA...October 11 2009—Presented by FLICS (Film Liaisons in California Statewide), the 15th Annual California On Location Awards was a stellar night of awards honoring production teams, location scouts, location teams and the finest national, state and local officials. Hosted by Lorin & Elizabeth Dreyfuss at the Downtown Marriott Los Angeles in front of a capacity crowd, top honors for the evening was awarded to Glenn Gainor, Head of Physical Production, Sony/Screen Gems who received the Signature Award & *Takers* receiving the Location Team of the Year for Features award.

One of the evening's highlights came during the acceptance speech of Jim McCabe who was honored with the Lifetime Achievement Award for his work as a location manager on such TV shows as *Charlie's Angels*, *Cagney & Lacey*, and *A Team* to name a few and feature films *Speed* and *Rising Sun* among many others.

For a complete list of winners, see page 4...

This year's Diamond Level sponsors included: Daily Variety, L.A. Marriott Downtown, Contigo Visual, Morongo Casino Resort & Spa, The Showpros and Teamsters Local 399.



Sony/ Screen Gems—*Takers* Receives Location
Team of the Year for Features

Did you know?

- FLICS consists of 44 different film offices in California.
- FLICS sponsors the annual COLA awards.
- FLICS offices have up-to-date permit and contact information for their area.

Chairman's Note:

Jerry Day, Tuolumne County Film Commissioner
Chairman, FLICS

Welcome to the first issue of the FLICS newsletter. We are 44 film commissions throughout the state working together to keep filming in California. Our strategy is simple: educate our membership to provide a standard level of service, pool our resources to market our jurisdictions, and utilize our network to both solve problems and refer clients to other resources within the state. While I'd like to

think my community, Tuolumne County, has everything a filmmaker could want, I know if I don't have it someone else in California does. With this attitude we pledge to do our part to keep projects – and jobs – within our Golden State.

Congratulations to all the winners and nominees at this year's COLAs. This awards show honors the location professionals

and public employees who have displayed excellence in our communities. We want you to know that we appreciate every one of you. You are essential to our effort and we look forward to working with all of you again soon.

Continued, Page 4...

Humboldt County

Mary Cruse, Humboldt County Film Commissioner

Humboldt County is best known for redwoods and other tidbits – but we are so much more. We are thrilled to offer several new locations. Pacific Lumber Company was the largest redwood mill in the world. The old mill town has been sold, but will keep its historical integrity. It



includes a hospital, inn, 1927 movie theatre, a 100,000 square foot mill building, country churches, small homes and more.

Many of our small towns easily transport one back to the 19th or 20th century, with architecture ranging from Victorian to log cabins. The county seat of Eureka does not charge a permit fee, so ease of shooting in the city is a dream.

Beyond redwoods, forest options are alder, spruce, oak, fir and more. In addition to the Pacific Ocean, we have six rivers, hundreds of tributaries, lakes, ponds, lagoons and wetlands.

There are 22 California State Parks within the Humboldt County, all with experienced, friendly staff. Our County Parks also provide beauty and diversity, including beaches that allow vehicles on the sand, dunes, rocky coastline, black sand beaches, world-class hang



gliding and rock climbing. We can typically get a County Park permit within a day once we have the insurance certificate. Our film commission has a great working relationship with each city and permitting agency and can assist production companies of all sizes.



Our skilled crew base is experienced, reliable and pleasant to work with. We have a deep crew base because of the film program at Humboldt State University, and because many have relocated here.

We have been diligently strengthening relationships with businesses and private landowners and offer many soft incentives including discounted hotel rates; catering and craft service marvels, and landowners

who are eager to use their property in a film.

We recently added several properties over 1,000 acres, one is a country compound with 5 guest houses, tennis court, orchards, barns, private river access and more.

Humboldt County is better positioned to handle feature filmmaking needs than we ever have been, increasing the inventory of equipment, as is our selection of RVs. The Arcata-Eureka Airport (ACV) offers non-stop service from L.A. – about a 2-hour flight.



We are eagerly anticipating the launch of our new website and photo library by February. Stay tuned and please call me with any inquiries of questions. Mary Cruse 24: 7, filmhumboldt@gmail.com 707-223-8462 www.filmhumboldt.org

Tulare County

Loretta Feldstein, Film Commissioner

Less than 200 miles from the center of “The Zone” and east of Interstate 5 in California’s central San Joaquin Valley, you will find TULARE COUNTY, California’s *Corniest* County. TULARE COUNTY grows lots of corn!



In addition to all kinds of agriculture, some of nature’s most impressive natural resources

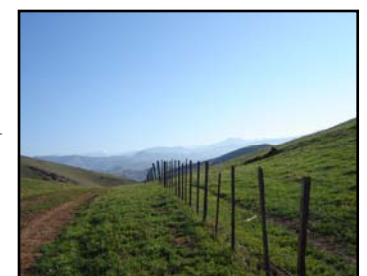
can be found in TULARE COUNTY. Along the east side of the County are the Sierra Nevada Mountain Range, Sequoia National Park, National Monument and National Forest, Mineral King, Golden Trout, and Domelands Wilderness areas.

More TULARE COUNTY Highlights: Terminus Dam at Lake Kaweah is the location of a futuristic structure that looks like a Jack-o-Lantern’s mouth

on Google Earth. This concrete utility is the largest of its kind in the world.

The annual World Ag Expo is the hot spot for agricultural technology and innovation on 2.6 million square feet of show grounds every February.

And there’s more....Tule River Indian Reservation is in TULARE COUNTY along with artsy mountain communities and museums rich with history and culture. Tulare County has many diverse communities and neighborhoods, from down-trodden to proud, modest to arrogant. Charming down-towns, rural and urban areas, parks, lakes, streams and beautiful scenic roads can all be found in TULARE COUNTY.



Incorporated cities within TULARE COUNTY: Dinuba, Exeter, Lindsay, Porterville, Springville, Tulare, Visalia (County Seat) & Woodlake. You are invited to Shoot in TULARE COUNTY.

www.co.tulare.ca.us
559-733-6653
feldste@co.tulare.ca.us



Vallejo/Solano County

Jim Reikowsky, Film Liaison

Solano County's 823 square miles are conveniently located in Northern California between San Francisco and Sacramento and at the southern end of the Napa Valley. While parts of Solano County are situated on beautiful San Pablo Bay, Suisun Bay, and the Sacramento River delta, the inland areas of the county offer acres of open agricultural land in the Sacramento River Valley. Filming in Solano County is easy and inexpensive, and parts of the county are located within the 30-mile San Francisco production zone.

Over the last 13 years, Vallejo's former Mare Island Naval Shipyard has proven to be popular with the entertainment industry. Along with its many unique locations, including officer mansions, huge dry docks and brick buildings predating the Civil War, the island also contains several large industrial buildings left behind by the Navy, that production companies have been able to convert to temporary sound stages for their projects.

Vallejo's Six Flags Discovery Kingdom is one of the world's only combination wildlife park, oceanarium and theme park and not



only are they film friendly but they also have many talented animal "actors" available for use.



only are they film friendly but they also have many talented animal "actors" available for use.



Since 62% of the county is farmland or open space, rural parts of Solano County contain miles and miles of country roads, large acreages of many types of crops, and ranches of all shapes and sizes. You will also find miles of bay and river coast line, as well as sloughs and delta areas. Additionally new windfarms have begun to spring up in the Montezuma Hills area of the county.

As with all FLICS members, the Vallejo/Solano County Film Office is happy offer many no fee services to the entertainment

community. We take pride in being familiar with the best locations in Solano County. If you are scouting Solano County we will help you save time by helping you to narrow your search to the right areas. We also understand the workings of our local governments and local permit requirements.

And though Solano County is mostly rural, a large, experienced, and knowledgeable crew base is located in both the San Francisco and Sacramento metro areas, as well as throughout Solano County. We will be happy to help you find any crew you might need. So whatever the project or the location, the Vallejo/Solano County Film Office is committed to bringing the entertainment industry to the county. We want to ensure filming will continue to generate economic activity for the area while making sure that local communities have a good experience with the film industry and want to invite them back again and again.

www.VisitVallejo.com/film

707.642.3653

jim@visitvallejo.com



FLICS is a network of regional film offices and commissions that work cooperatively with the California Film Commission to retain, attract and facilitate feature film, television commercial and print media production in California. FLICS welcomes project inquiries and offer variety of services to help expedite and assist productions.

California Only Locations Trade Show & Reception

Saturday, February 27, 2010

1pm - 6pm

2000 Avenue of the Stars



We are featured on the Web!

www.FilmCalifornia.com



FLICS

Film Liaisons in California

www.FilmCalifornia.com
www.Film.Ca.Gov
www.LocationMangers.org

Questions or comments on this newsletter? Please contact Charla Teeters, Film Commissioner for Imperial County, at 760.337.4155 or Charla@FilmImperialCounty.com

California On Location

Chairman's Note

Continued from page 1...

As I write this I know many of my colleagues are working hard on their marketing materials for the upcoming year. Hopefully we will all have them ready for our next FLICS event, our California-only show. Co-sponsored with our state leader, the California Film Commission, this event is an opportunity for location professionals to spend a few hours with us and see the myriad of locations our state has to offer. We'll have all the details early in the New Year.

In this newsletter you will find information about many of our FLICS members, their resources and locations. I hope you learn something new and you'll let us know what you think about our format and presentation.

Happy Holidays,,

Jerry Day

Chairman, Film Liaisons in California Statewide (FLICS)

HAPPY HOLIDAYS

To You and Yours!



2009 COLA Winners

... Continued from page 1

Location Professional of the Year – Stills

Lorin Miller – Unforgettable Productions – “O’Neill Fall/Winter Keepsake Catalog”

Location Professional of the Year – Commercials

Robert Gregory – Aero Films—“Playstation 3”

Teamsters Local 399 Assistant Location Manager of the Year – Features

Tristan Daoussis – “A single Man”

Teamsters Local 399 Assistant Location Manager of the Year – Television

Kim “Crabb – “House”

Public Employee of the Year – City

Michelle Cantrell & Ray Hunt – City of Lancaster

Public Employee of the Year – County

Dan Castillo – County of Riverside

Public Employee of the Year – State

Roger San Juan - Caltrans

Public Employee of the Year – Federal

Gina Thompson – United States Forest Service

Location Professional of the Year – Episodic Television

Darrin Lipscomb – FTP Productions – “Bad Mother’s Handbook”

Location Professional of the Year – Features

Michael Chickey – Fox Searchlight Pictures – “500 Days of Summer”

Location Team of the Year – Episodic Television

Blind Decker Productions – “Dexter”

Terry Gusto – Location Manager

Kris Bunting – Key Assistant Location Manager

Kim Crabb – Key Assistant Location Manager

Steve Levine – Key Assistant Location Manager

Kathy McCurdy – Key Assistant Location Manager

Jennifer Smith – Key Assistant Location Manager

Christopher Rojas – Assistant Location Manager

Location Team of the Year – Features

Sony Pictures’ Screen Gems – “Takers”

Doug Dresser – Supervising Location Manager

Brian O’Neill – Location Manager – 2nd Unit

Peter Gluck – Key Assistant Location Manager

S. Dylan Kirkland – Key Assistant Location Manager

Donny Martino – Key Assistant Location Manager

Kyle “Snappy” Oliver – Key Assistant Location Manager

Martin Cummins – Key Assistant Location Manager

Rich Heichel – Assistant Location Manager

Brigette Pope – Assistant Location Manager

The 16th Annual California On Location Awards will be held at the 2009 Mobil Four Star Beverly Hilton Sunday, October 24, 2010.

We are featured on the Web!

www.FilmCalifornia.com